

# LIGHTING DESIGN

WHY CHOOSE LUMINATION ?

- We are a retail group with over 20 years experience
- Through our retail stores we help a huge number of customers and we see many projects. We collate all that experience when considering a new project.
- We have accounts with all the leading lighting suppliers and actively 'in-touch' with the developments in the industry.
- We direct import from the centre of world lighting production to bring to you exclusive products designed and specified by us .
- Every project is different and every customer is different. We take the time to interpret your requirements.
- Whether the project is state of the art modern, contemporary or classic we are here to guide you.

**LUMINATION**  
*The Lighting Specialist*

Lighting design is not only about location, intensity and control it is about design , aesthetics and ambience.

At Lumination we are uniquely qualified to be your lighting designers.

# LIGHTING DESIGN

## OUR APPROACH

- Ideally we are involved in the project well before first electrical fix so as we can optimise our approach.
- Working from drawings we will consider for each room a number of lighting options. We will identify the 'special' opportunities to make the lighting unique.
- We always look for the features which will help make the project special.
- We will consult with the client to get to know their preferences and to understand how they will use each room and what they want from the lighting.

**LUMINATION**  
*The Lighting Specialist*

Throughout the project we are actively considering the eventual fittings we will be proposing.

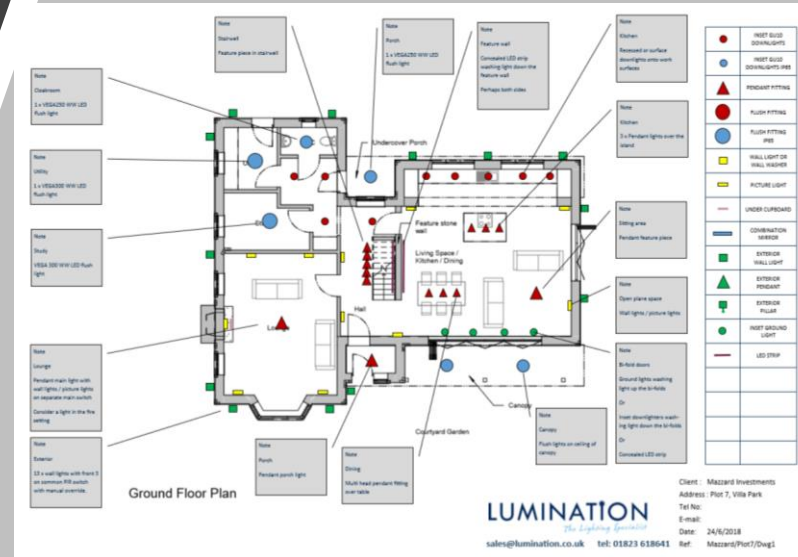
Design is not just a technical process it is about aesthetics, mood and individuality.

Lumination is uniquely qualified to be your lighting designers.

# LIGHTING DESIGN

## DELIVERABLES

- Based on client / architect drawings we will prepare a draft design. This will be presented both as a spreadsheet summary and as an annotated pdf.
- We will discuss the draft with the client room by room to ensure we have correctly understood the requirements and to discuss options.
- A further draft will be prepared and once we are all satisfied with the overall design and we will propose the fittings to be incorporated into the project.
- As we have hundreds of fittings on display we prefer for the client to visit our showroom at this stage to fully appreciate the fittings we are discussing and to consider the wealth of options available.

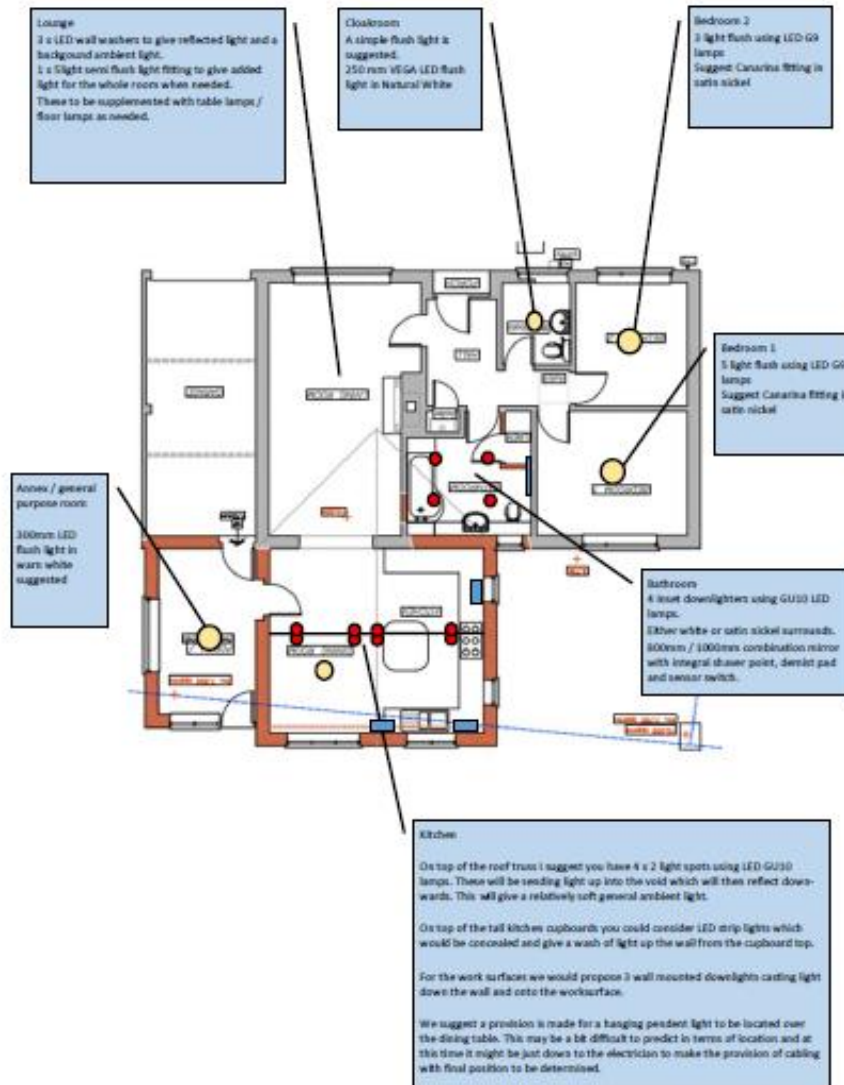


# Mr & Mrs BW -Taunton Penthouse Apartment

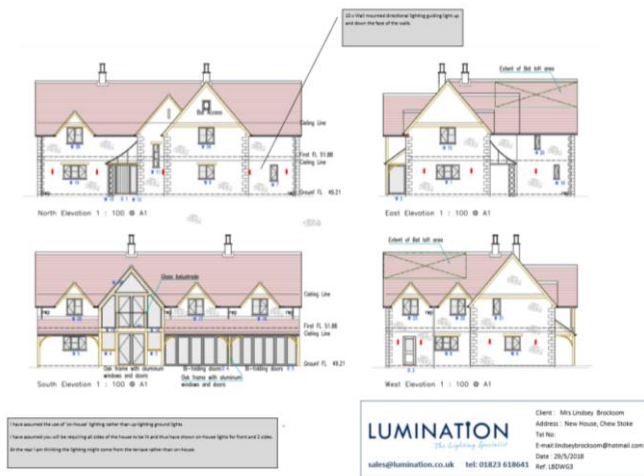
- Assignment was to design lighting for a contemporary penthouse apartment.
- Client seeking sleek , modern , Scandinavian look with some 'funky' pieces.
- Extensive use of LED fittings throughout with most rooms on centralised dimmer control.
- Lighting for the exterior was important because of the prominence of the property and in particular the penthouse presence.
- Using our bespoke services the developer ordered a 12m pendant light for the stairwell.



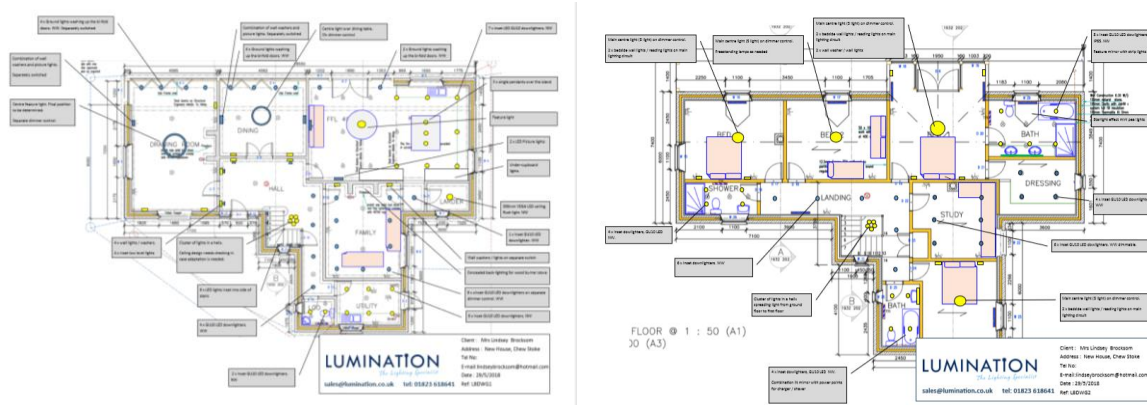
# Mrs F -Taunton Bungalow extension and refurbish



- Assignment was to provide lighting design for whole house comprising 2 bed bungalow and extension
- Site visit to assess property and discuss room by room with client
- Prepare spreadsheet covering each room and lights proposed together with commentary as regards electric work required switching arrangements etc.
- Proposal for supply of selected light fittings.

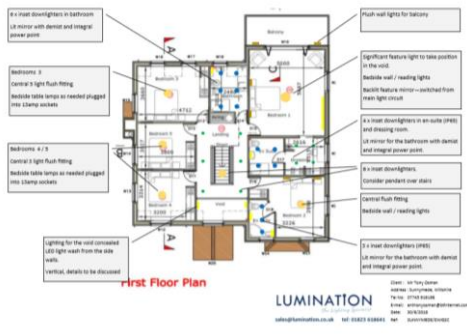


## Mrs B - Taunton New Build 5 Bedrooms



- Assignment was to provide lighting design for whole house comprising 2 bed bungalow and extension
- Site visit to assess property and discuss room by room with client
- Prepare spreadsheet covering each room and lights proposed together with commentary as regards electric work required switching arrangements etc.
- Proposal for supply of selected light fittings.

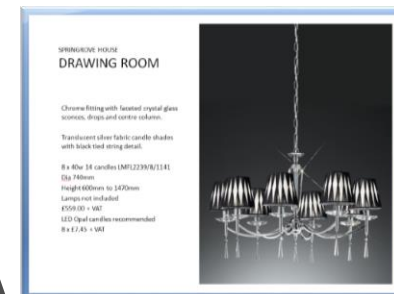
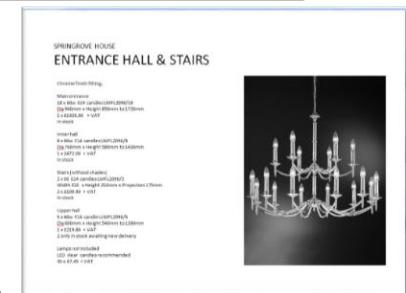
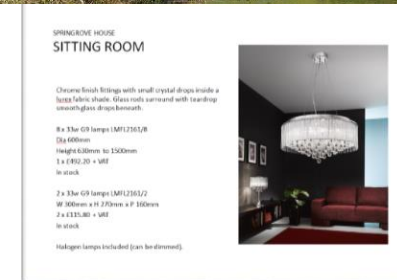


[illegible]

- Assignment was to provide lighting design for whole house comprising 5 bed detached property
- Design completed from pdf drawings and 2 consultation meetings with client.
- Marked up pdf drawings produced in 2 drafts giving client sufficient information to brief electrician for quotation.
- Budget proposal prepared based on selected light fittings.
- Awaiting build and then we will supply the fittings.

# Mr C.W - Taunton Georgian Mansion

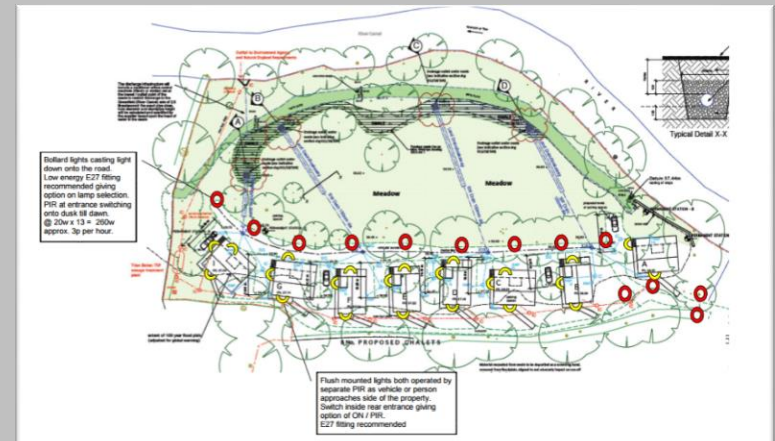
- The assignment was to provide lighting for whole property including the garden
- As a Georgian mansion house with Victorian additions the interior design theme was for a sophisticated and modern look but in sympathy with the property's historical heritage.
- In most of the rooms we settled on classic style fittings but in chrome finish thus creating a design bridge between modern and period. A number of modern crystal pieces were also selected to add a little more contrast. In the beautiful breakfast room we selected a pair of 18 light fittings in cream and gold to make the room distinctive and to complement the decor.
- The garden lighting included flood lighting of the primary trees at the boundary of the front lawns some 150m from the house. We tested several types of light including sodium, mercury, LED, and finally selected to use metal halide to bring out the fabulous colours of the foliage, branches and trunk.

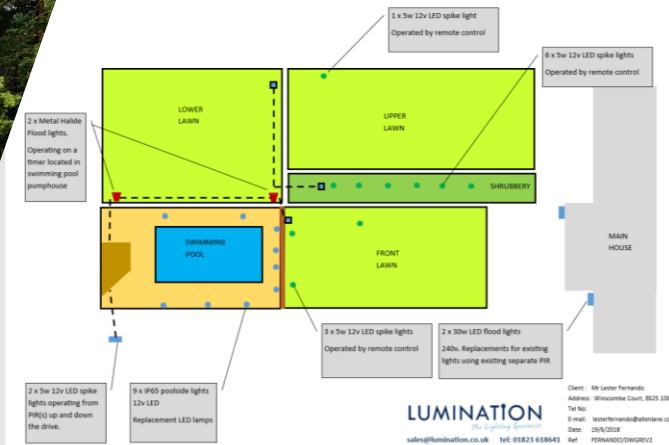




# EXTERNAL LIGHTING DESIGN

- External lighting of a plot, a development, or a garden depends on many of the same considerations as for internal lighting
  - How will the space be used
  - What are the primary features
  - Customer likes and dislikes
- Whether to use 12v or 240v will be a major decision which will depend on the type and intensity of the lighting and also on the level of flexibility required.
- The selection of light source to bring out the best in the shrubs trees and natural surroundings will be a consideration.
- Metal Halide, halogen, LED, sodium, mercury are all options and each offer different effects and advantages.
- We frequently set up trials with customers in order to optimise selection and to conclude the right effect for the particular project.
- We have designed lighting for all sorts of spaces from a modest town house garden to grounds of a Victorian mansion.
- If bat conservancy is a factor then we have the experience to provide a sympathetic solution.





- Lighting a garden to make the most of its features
- The site visit is all important as drawings are only part of the story
- Switching arrangements to achieve the desired result may combine PIR switches , remote control and proximity sensors.
- Different trees need different solutions depending on height , density of foliage
- Deciduous trees verses evergreen require different solutions.
- Night time trials are often used to optimize lighting selection and location
- Swimming pools properly lit become inviting and unique features of a properly planned garden.

# GARDEN LIGHTING DESIGN



# LIGHTING DESIGN

## AVOID THE PROBLEMS

We have seen the results of not having lighting specialists to assist with design:

- The 'builder designer' who has a mindset resulting in overuse of the down lighter. Used liberally the down lighter fails to respond to the individuality of the room as well as failing aesthetically.
- The 'amateur designer' who fails to appreciate the alternative approaches to lighting and fails to respond to the individuality of the room.
- The 'builder designer' who just gets it totally wrong with fittings in the wrong place, inadequate lighting levels etc....
- The 'electrician designer' who has been blinded by technology and over engineers the property into a control nightmare.

Getting the lighting design right will bring out the best in the property as night time falls.

Good design will ensure customer satisfaction. Get it wrong and it will be the source of constant irritation for the customer.

Lumination is uniquely qualified to be your lighting designers.